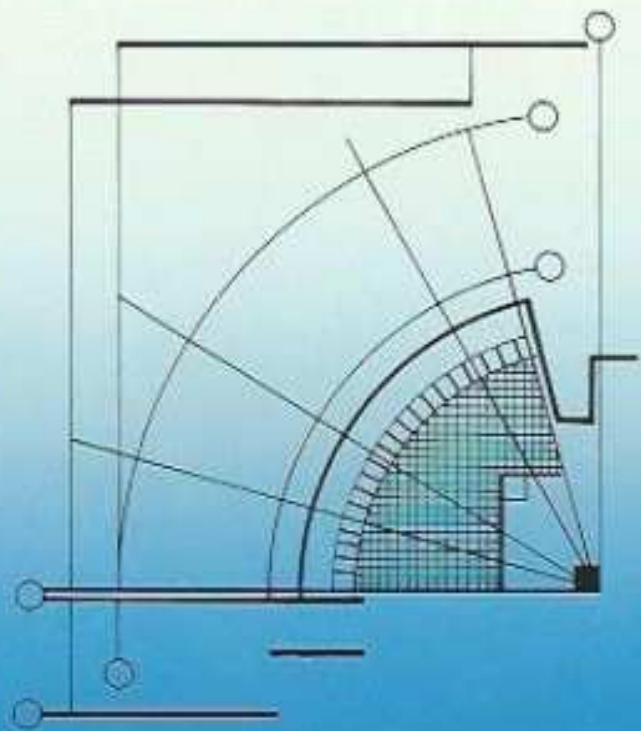


PRIME



IN ARCHITECTURE
AND ENGINEERING

*Tools
for
building
a
stronger
business*



One topic turns up in almost every architectural and engineering magazine and seminar.

Computer aided design (CAD), and how it increases your productivity, improves the design process, and simplifies the flow of information.

All true. *If* the software is powerful enough, or was written for A/E firms and not adapted from another industry. *If* the systems can actually communicate among departments, or even within a department. *If* the hardware can share programs or be upgraded easily. And *if* the system is affordable.

That's rarely the case, however: most vendors take a piecemeal approach toward your field. The one major exception: Prime Computer.

Prime is dedicated to providing you with the finest hardware, communications and industry-specific software available, to meet your unique professional needs. But more importantly, we can link these products into a comprehensive computer system - or network. One that is built on CAD, but that works for and helps manage your *entire* business. Everyone uses the same timely information - architects and draftsmen, engineers, the accounting department and marketing.

Only Prime offers this kind of total system solution to architectural design and administrative problems. It's a complete, computerized "tool set" to help you build a stronger, more competitive business.



WHY COMPUTERIZE WITH PRIME?

Installing a Prime 50 Series™ computer, which has power to spare for your most demanding tasks, together with the design software that's exactly right for your firm, lays the groundwork for your future. The system will take you far beyond CAD, into totally computerized operations, because you can add business programs or new design packages as you need them.

Prime is as committed to providing excellent design and engineering tools as you are to providing excellent building designs.

One answer is productivity

An A/E system from Prime takes time away from doing mundane chores, so people can do more profitable work. We can help people finish drawings in hours, not days. We can help people finish drawings in hours, not days. Estimate complex costs in minutes. Produce documentation extremely quickly. And even improve the coordination of design data and other information among disciplines.

The result is a tremendous boost to productivity and creativity. People can do much more, much faster, than ever before. So you can concentrate on adding clients instead of employees.

But higher productivity is not the only reason to purchase a Prime® design system.

Expand your services

Many of the software packages that run on Prime systems will let you provide or improve services like facilities planning, interior design, engineering analysis and construction management. And the more you offer

clients, the more business you'll receive from them.

Use industry standards and regulations more easily

The programs in our architectural solution all contain existing industry standards. If the standards change, the software is quickly updated to reflect the changes. You always work with up-to-the-second industry standards and regulations.

Many hardware choices

The Prime 50 Series is structured to let you select the kind of system you need now, then upgrade as your needs change and business grows. We offer a full range of superminicomputers, color 3-D graphics workstations, terminals and printers that you can add anytime, anyplace. And since our systems can form a powerful network, users across the hall or around the world can work together.

Improve profitability quickly

The monthly cost of a Prime CAD system with two design workstations can be as low as that of two intermediate draftsmen. However, each CAD user can often do twice the work of a draftsman using manual methods. And the system handles so much beyond design and drafting that it actually helps reduce business overhead.

Finally, creative leasing and financing opportunities make obtaining a CAD system from Prime very easy.

With all these advantages on our side, it's no wonder that so many architects have designs on Prime's computer systems.



THE FOUNDATION OF OUR SYSTEMS

It's called PRIME MEDUSA™ AEC-Architectural Design. And it's the best two- and three-dimensional design, drafting and documentation package on today's market.

PRIME MEDUSA AEC automates drafting through its advanced linework and symbol construction, annotation and dimensioning capabilities. It's modular, so you can add new capabilities as you need them.

Draftsmen can design anything on a full-color graphics workstation screen, adding or removing information easily. PRIME MEDUSA AEC enables them to move the design around, stretch or shrink it, mirror it, rotate it, copy and edit it - all electronically. When the design is correct, a few keystrokes stores it in a central, online database for future use.

It's easy to get up to speed...

The system is a breeze to learn because it uses terms and techniques that your draftsmen and designers already work with. So there is little disruption to the workplace during training.

...Easy to use...

Sophisticated design makes PRIME MEDUSA AEC very simple to operate.

A specially-developed menu puts all drafting functions and symbols for general and discipline-specific drawings at a user's fingertips.



PRIME MEDUSA AEC makes coordination and checking easier: you send clients and contractors only accurate plans. It comes with commonly-used symbols for all disciplines, stored in special libraries. Designers can also create symbol libraries for your firm, standardizing drafting and reporting. Quickly retrieved and displayed, the symbols eliminate tedious redrawing. Automatic dimensioning and crosshatching further reduce the time it takes to finish drawings.

The system also generates material take-offs and schedules tailored to your company, and converts information into Initial Graphics Exchange Specification (IGES)-compatible formats.

...Adapts to your environment...

You can customize PRIME MEDUSA AEC almost any way you want. Define formats, line styles, color codes and other parameters. Choose and change annotation and dimensioning formats for a project. Even create your own programs to automate repetitive tasks or procedures, without programming experience.

...is packed with architectural drafting capabilities...

The architectural drafting components of PRIME MEDUSA AEC improve productivity in such tasks as conceptual planning and layout, and massing studies. It's great for structural, mechanical and electrical building plans and details.

And its versatility is ideally suited to such functions as generating schematics, elevations, control diagrams and riser diagrams.

Designers and draftsmen can make the most of their time and talent, and of your resources. Powerful system features let them

generate regular and irregular structural grid and column layouts in seconds

place and move windows, walls, doors and plumbing fixtures

create schedules automatically

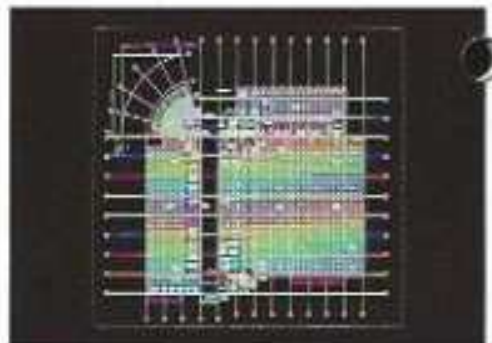
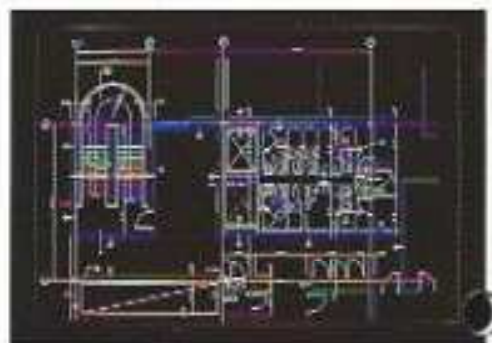
select from many architecture specific linestyles and text fonts

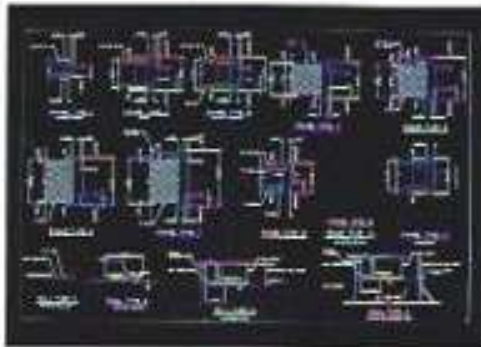
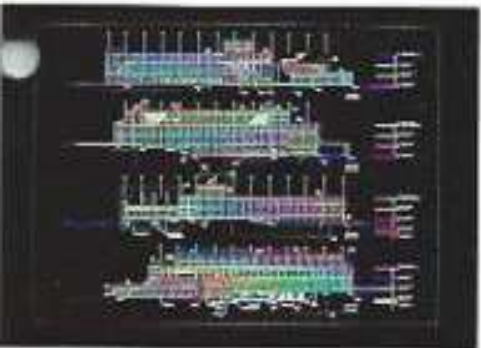
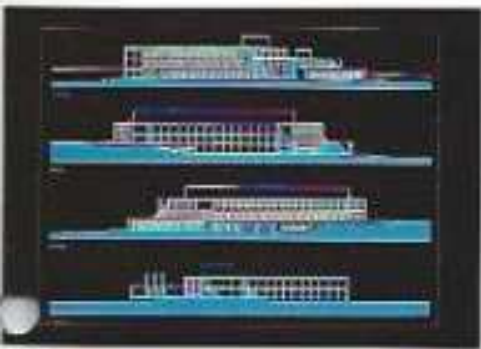
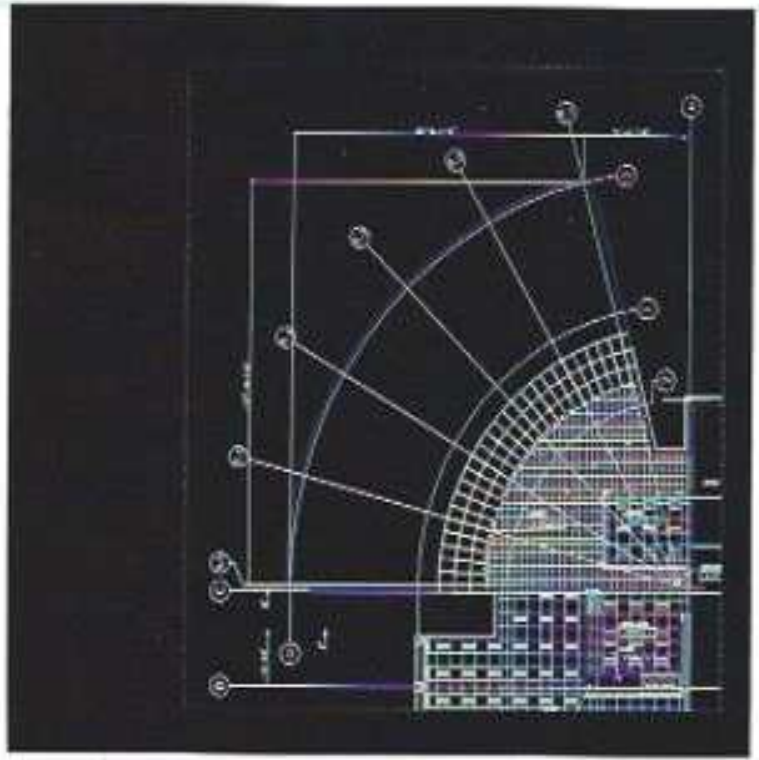
They can change all of these through the menu instead of by erasing, remeasuring and redrawing.

Information can be entered on up to 1024 layers. Start with the foundation, then add floor plans, wiring, plumbing, HVAC and other requirements on different layers as they become necessary.

Proportional spacing tables, user-defined text fonts and eight text fonts supplied with PRIME MEDUSA AEC give signage designers a powerful tool for addressing their specific requirements.

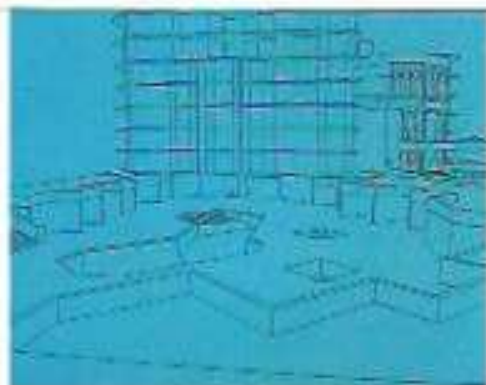
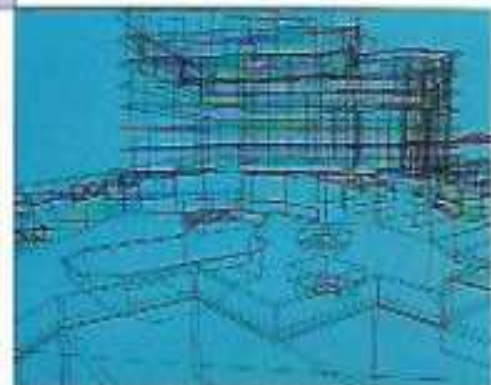
By using Prime's unique variational geometry capabilities, designers can even adjust the size and shape of a drawing automatically. This lets them create components that have standard shapes but varying dimensions (such as furnishings), without redrawing everything or maintaining mammoth symbol libraries.





NO.	DESCRIPTION	QTY	UNIT	AMOUNT	REMARKS
1
2
3
4
5
6
7
8
9
10
11
12
13
14
15
16
17
18
19
20
21
22
23
24
25
26
27
28
29
30
31
32
33
34
35
36
37
38
39
40
41
42
43
44
45
46
47
48
49
50
51
52
53
54
55
56
57
58
59
60
61
62
63
64
65
66
67
68
69
70
71
72
73
74
75
76
77
78
79
80
81
82
83
84
85
86
87
88
89
90
91
92
93
94
95
96
97
98
99
100





...offers 3-D solid modeling...

The powerful 3-D Design Modeling graphics package lets architects construct three-dimensional, computer models of an entire building, portions of it, landscaping, - whatever they want.

Unlike most competitive systems, PRIME MEDUSA AEC does more than just extrude shapes from 2-D drawings. You can actually mold, shape and model in three dimensions. The system also automatically produces multiple cross-sections, performs volume calculations, and runs many other sophisticated operations available only with solid modelers.

And with our 3-D Shaded Viewer, a designer controls viewing angle and light source, enhancing his or her ability to visualize the entire project from different perspectives.

...and completes the picture with thousands of words

PRIME MEDUSA AEC does not stop with design and drafting. It is also a documentation system that extracts, modifies, and analyzes graphic and textual data, so your staff can create reports and schedules easily.

PRIME MEDUSA AEC. The most powerful 3-D architectural modeling package you can buy. It's a package that you can really build on.



BUILDING A SYSTEM BRICK-BY-BRICK

With a CAD system from Prime, you start at the size that's right for you and install functions as they become necessary.

What makes this possible is the many application software programs available from independent software companies. These programs were written by professionals who *know* the needs of the AEC industry. They are targeted directly at areas that matter to you and your business. And they are all proven in the office or the field.

Packages are available for engineering, design management, and business and construction management.

Engineering

Hundreds of programs serve these diverse needs. For civil engineering, packages are available for 3-D mapping and surface modeling; bridge and highway design; earthwork calculations; and other applications.

Structural engineers can benefit from programs for designing in 2- or 3-D, complete with steel tables and code checks; finite element modeling; pre- and post-processing; and solid geometry.

And electrical or mechanical engineers can choose popular programs for HVAC; piping; energy management; power distribution; and lighting.

Design Management and Business Management

Managing a business and the projects within it demand sophisticated recordkeeping. We offer software that can help you schedule and track complex jobs, prepare specifications and estimates, even keep better account of your contractors.

There are packages for word processing and business graphics; material tracking; estimating; financial management and accounting; and business management programs that integrate project control with financial applications like progress reports, general ledger, accounts receivable and accounts payable.



PRIME HARDWARE: POWER TOOLS FOR INFORMATION

Software is useless without the right hardware to drive it. For the A/E world, that hardware is the Prime 50 Series.

The Prime 50 Series consists entirely of 32-bit superminicomputers. Each is "multifunctional" - different people can design, write and balance books simultaneously.

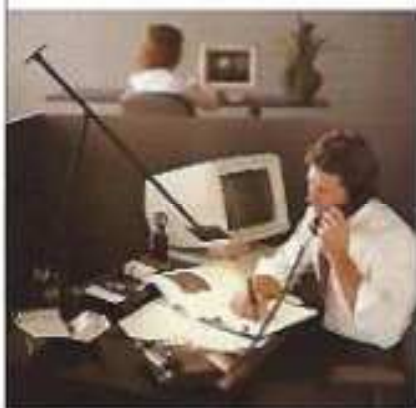
The Prime 50 Series starts with the Prime 2250™ and Prime 2550™ superminis. Perfect for office environments, they give you plenty of power at a ground-floor price and can run all the computing needs of many up-and-coming firms.

Up the line is the Prime Performance Group. The mid-sized Prime 9650™ and Prime 9750™ and the exceptionally fast Prime 9955™ systems are powerful enough to run the most intensive jobs of bigger organizations; smaller Prime systems, distributed throughout the group but tied into the central system, give everyone computing capabilities.

Since all of our computers are compatible under the PRIMOS® operating system, you don't have to replace or rewrite software when you upgrade. PRIMOS completely protects your investment in programs.

Beyond these lie the peripherals that your people will use. Our color graphics workstations have great price/performance ratios. Or you can pick from Tektronix models that superbly display the 3-D models PRIME MEDUSA A/E/C creates. The Prime PERFORMER™ terminal, with its color and full business graphics options, handles your word processing and financial management needs.

Prime systems work together as easily as they work alone. Our networking and communications products let them operate with Prime systems located near or far. We can even connect to other vendor's equipment, working with computers you may already have. This gives everybody the right information, at the right time.



PRIME IN ARCHITECTURE
AND ENGINEERING: WITH YOU
FROM THE FIRST DESIGN
TO TOPPING OFF

Prime is the proven CAD system supplier to your profession, from small firms to large corporations, utilities and universities around the world. Our solutions help generate billions of dollars annually; they also help train many of the world's future architects and engineers.

Through this involvement, Prime has gained a special knowledge of your needs and how we can help fulfill them. The solutions that we provide back up our understanding with action.

We have committed the resources and industry expertise it takes to support you. In fact, we are so dedicated to the architectural and engineering community that we've established a special group whose only purpose is to anticipate, and meet, your computer requirements.

This group is staffed only with industry professionals, including architects and engineers. It's backed up by support centers to answer your technical questions and solve computer problems. And chartered to find only the finest A/E applications software solutions.

Combine this attention to your needs with the powerful Prime 50 Series, the caliber of PRIME MEDUSA AEC and our current third party software, and the many system service plans we offer and it's easy to see why Prime Computer is the choice for innovative architects and engineers.

Our products, working together in every part of your business, let you bring an idea along from a sketch to a bid to a new profile on the skyline.



PRIME and PRIMOS are registered trademarks of Prime Computer, Inc., Norick, Massachusetts. SO Series, PRIMF-MEDUSA, 3250, 7550, 9850, 0750, 9855 and PERFORMER are trademarks of Prime Computer, Inc., Norick, Massachusetts.

Copyright © 1985, Prime Computer, Inc. All rights reserved. Printed in the U.S.A.

Prime Computer, Inc.
Prime Park
Norick, Massachusetts 01702

The materials contained herein are summary in nature, subject to change and intended for general information only. Details and specifications regarding specific Prime Computer software and equipment are available in the appropriate technical manual, available through local sales representation.

U.S. OFFICES

Alabama
Birmingham

Alaska
Anchorage

Arizona
Phoenix
Tucson

California
Culver City
Irvine
Menlo Park
Mountain View
San Mateo
San Diego
San Francisco
Santa Clara
Woodland Hills

Colorado
Colorado Springs
Englewood

Connecticut
Wolcott
Greenwich

Florida
Hollywood
Jupiter
Tampa
Winter Park

Georgia
Atlanta

Idaho
Boise City

Illinois
Chicago
Oak Brook
Schmiedberg

Indiana
Carmel

Kansas
Overland Park
Kansas City
Topeka

Massachusetts
Framingham
Milton
Framingham
Norfolk
Quincy
Topsfield

Michigan
Livonia
Farmington Hills

Minnesota
Minneapolis
St. Paul

Missouri
Kansas City
St. Louis

Nebraska
Omaha

New Jersey
Hoboken
New York
Rutherford

New Mexico
Albuquerque

New York
Albany
Amherst
Schenectady
New York
Rochester

North Carolina
Charlotte
Greensboro

Ohio
Columbus
Cuyahoga Falls
Akron
Cincinnati

Oklahoma
Oklahoma City

Oregon
Portland

Pennsylvania
Pittsburgh
Pottsville
Reading
Scranton

Rhode Island
Providence

South Carolina
Greenville

Tennessee
Nashville
Nashville

Texas
Austin
Dallas
Houston

Utah
Salt Lake City

Virginia
Arlington
Blacksburg
Falls Church
Farmingdale
Fremont
Herndon
Reston
Tyngsboro

Washington
Bellevue
Burien
Everett
Renton
Seattle

West Virginia
Martinsburg

Wisconsin
Madison

Wyoming
Cheyenne



INTERNATIONAL OFFICES

Argentina
*Buenos Aires

Austria
Austria
Vienna

Belgium
Brussels

Canada
Ottawa

France
Paris
Toulouse

Germany
Frankfurt
Munich

Italy
Milan
Rome

Japan
Tokyo
Osaka
Nagoya
Sapporo
Yokohama

United Kingdom
London

Spain
Madrid

Sweden
Stockholm

Switzerland
Zurich

Taiwan
Taipei

U.S.S.R.
Moscow

U.S.A.
Boston
Dallas
Denver
Detroit
Houston
Los Angeles
Miami
New York
Philadelphia
Portland
San Francisco
Seattle
Washington
Wichita

U.S.A.
Boston
Dallas
Denver
Detroit
Houston
Los Angeles
Miami
New York
Philadelphia
Portland
San Francisco
Seattle
Washington
Wichita

U.S.A.
Boston
Dallas
Denver
Detroit
Houston
Los Angeles
Miami
New York
Philadelphia
Portland
San Francisco
Seattle
Washington
Wichita

U.S.A.
Boston
Dallas
Denver
Detroit
Houston
Los Angeles
Miami
New York
Philadelphia
Portland
San Francisco
Seattle
Washington
Wichita

U.S.A.
Boston
Dallas
Denver
Detroit
Houston
Los Angeles
Miami
New York
Philadelphia
Portland
San Francisco
Seattle
Washington
Wichita

U.S.A.
Boston
Dallas
Denver
Detroit
Houston
Los Angeles
Miami
New York
Philadelphia
Portland
San Francisco
Seattle
Washington
Wichita

U.S.A.
Boston
Dallas
Denver
Detroit
Houston
Los Angeles
Miami
New York
Philadelphia
Portland
San Francisco
Seattle
Washington
Wichita

U.S.A.
Boston
Dallas
Denver
Detroit
Houston
Los Angeles
Miami
New York
Philadelphia
Portland
San Francisco
Seattle
Washington
Wichita

U.S.A.
Boston
Dallas
Denver
Detroit
Houston
Los Angeles
Miami
New York
Philadelphia
Portland
San Francisco
Seattle
Washington
Wichita

U.S.A.
Boston
Dallas
Denver
Detroit
Houston
Los Angeles
Miami
New York
Philadelphia
Portland
San Francisco
Seattle
Washington
Wichita

U.S.A.
Boston
Dallas
Denver
Detroit
Houston
Los Angeles
Miami
New York
Philadelphia
Portland
San Francisco
Seattle
Washington
Wichita

U.S.A.
Boston
Dallas
Denver
Detroit
Houston
Los Angeles
Miami
New York
Philadelphia
Portland
San Francisco
Seattle
Washington
Wichita

U.S.A.
Boston
Dallas
Denver
Detroit
Houston
Los Angeles
Miami
New York
Philadelphia
Portland
San Francisco
Seattle
Washington
Wichita

PRIME®